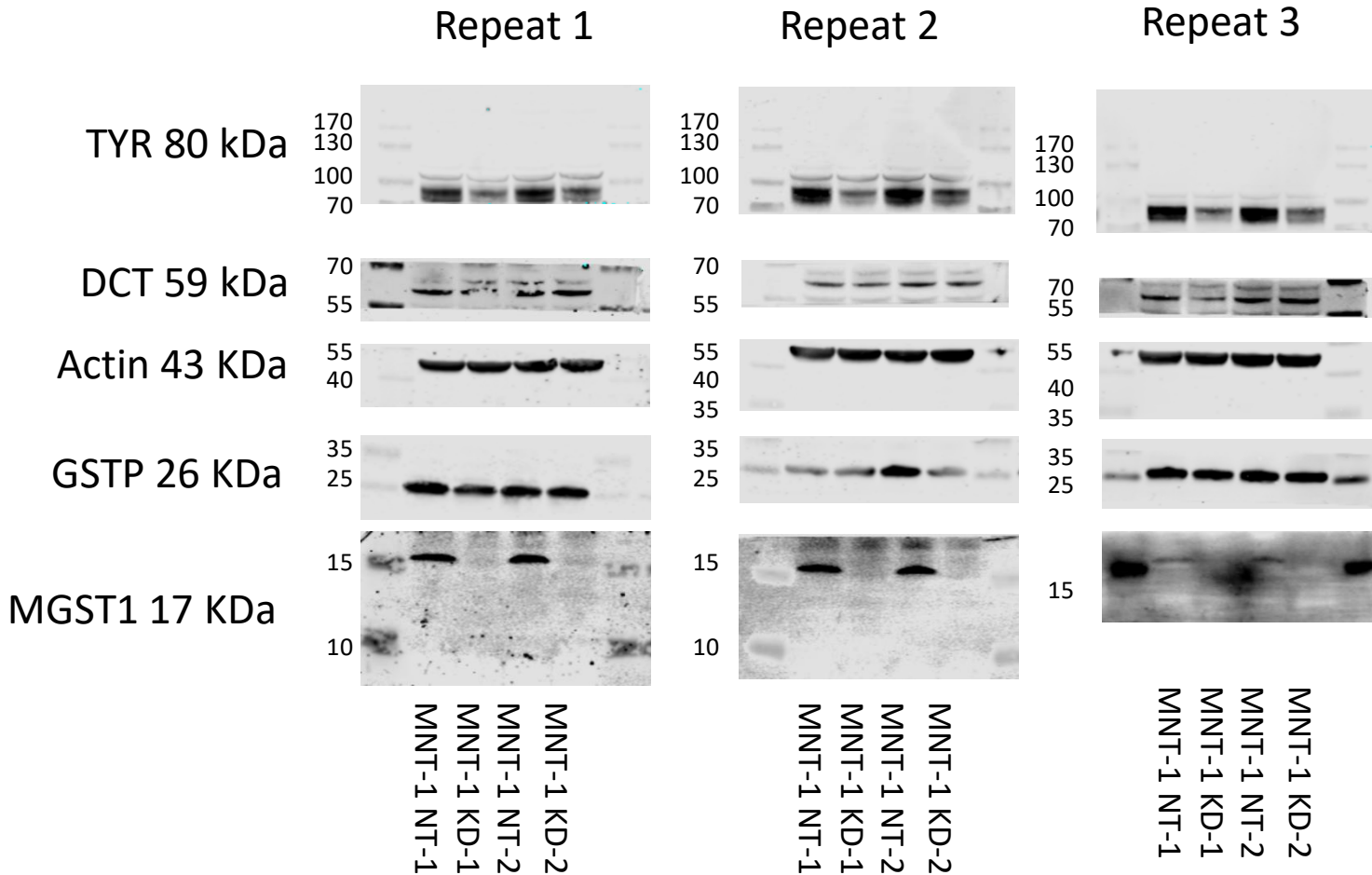


Figure 1. Example of original western blot for three repeats



If the whole membrane was cut to blot for different antibodies, you are required to load all pieces of whole blot and the molecular marker must be shown in each blot. Figure 1 shows the whole blot after cutting membrane at molecular weight 70 kDa, 55 kDa, 35 kDa and 15~25 kDa for TYR (80 kDa), DCT (59 kDa), actin (43 kDa), GSTP (26 kDa) and MGST1 (17 kDa).